



- 1** FOUNDATION TARGET INSERT
FTI

- HARD POINT SPIDER
HPS

- 2** CONSTRUCTION BALL / TARGET PAD
CBTP

- 3** TARGET REFERENCE PAD
TRP

- 4** MAGNETIC BASE TARGET HOLDER ADAPTOR
MBTHA

- CONSTRUCTION BALL
CB

- 5** CUBE ADAPTOR
CA

- 6** BOEING CUBE ADAPTOR (1 and 2)
BCA - 1 / BCA - 2

- BOEING CUBE ADAPTOR PIN
BCA PIN

- 7** BOEING HEADER TARGET
BHT

- 8** BOEING HEADER TARGET - 2
BHT - 2

- 9** LASER TRACKER - BOEING HEADER TARGET
LT - BHT

- 10** DOUBLE VECTOR TARGET PIPE MOUNT
DVT PIPE MOUNT

- 11** ECONOMY RING
E-RING

- 12** LEICA STAND ADAPTOR RINGS
LSAR - SET

- 13** LEICA LASER TRACKER HORIZONTAL MOUNT

FTI

Mounted in concrete flooring/foundations, etc., to allow for a permanent reference.

FTI ORDERING INFORMATION

	FAMILY	MATERIAL				
FTI STANDARD BUILD	FTI	brass				
CUSTOMER PROVIDES INFO	FTI					

HPS

Holds a Hard Point 90° for for locating to identifier rivets, scribe lines, etc.

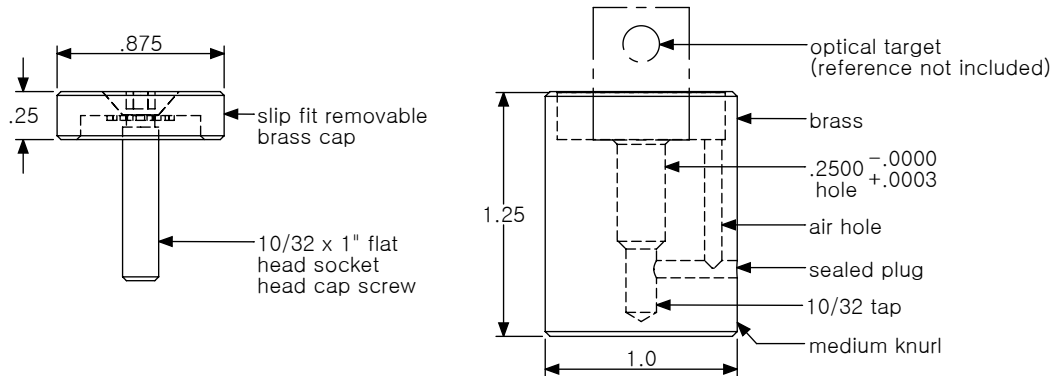
HPS ORDERING INFORMATION

	FAMILY	MATERIAL				
HPS STANDARD BUILD	HPS	aluminum				
CUSTOMER PROVIDES INFO	HPS					

REFERENCE NOTES

FOUNDATION TARGET INSERT

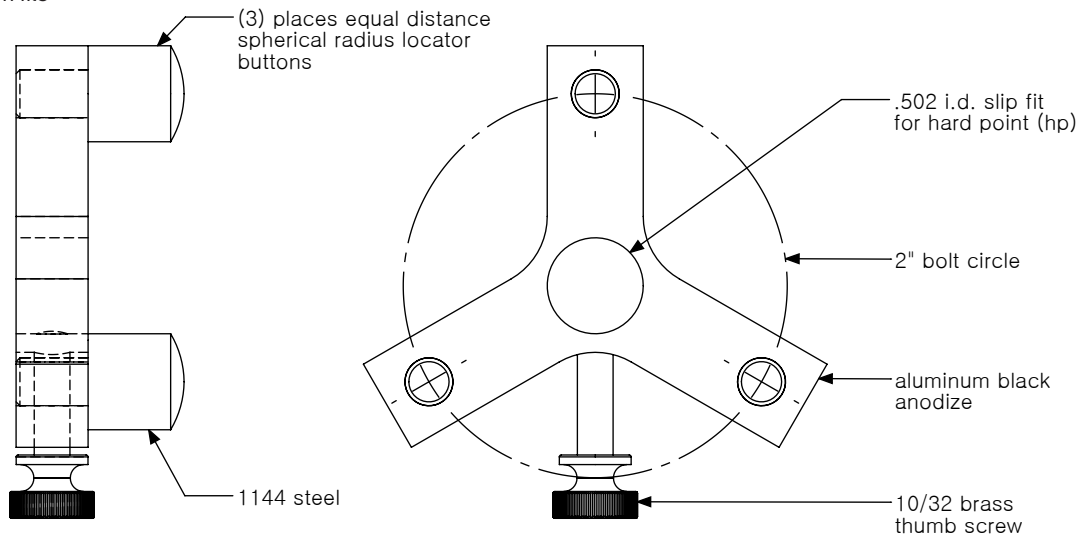
CAD on file



FTI FEATURES
MEDIUM KNURLED BRASS

HARD POINT SPIDER

CAD on file



HPS FEATURES
ALUMINUM BLACK, ANODIZED COATING

CBTP

Uses .2500 + .0003 / .0000 hole that is perpendicular to the top surface which allows interchangeability with standard construction ball, standard optical targeting, or larger diameter items such as Laser Tracker Sphere Mounts.

CBTP ORDERING INFORMATION

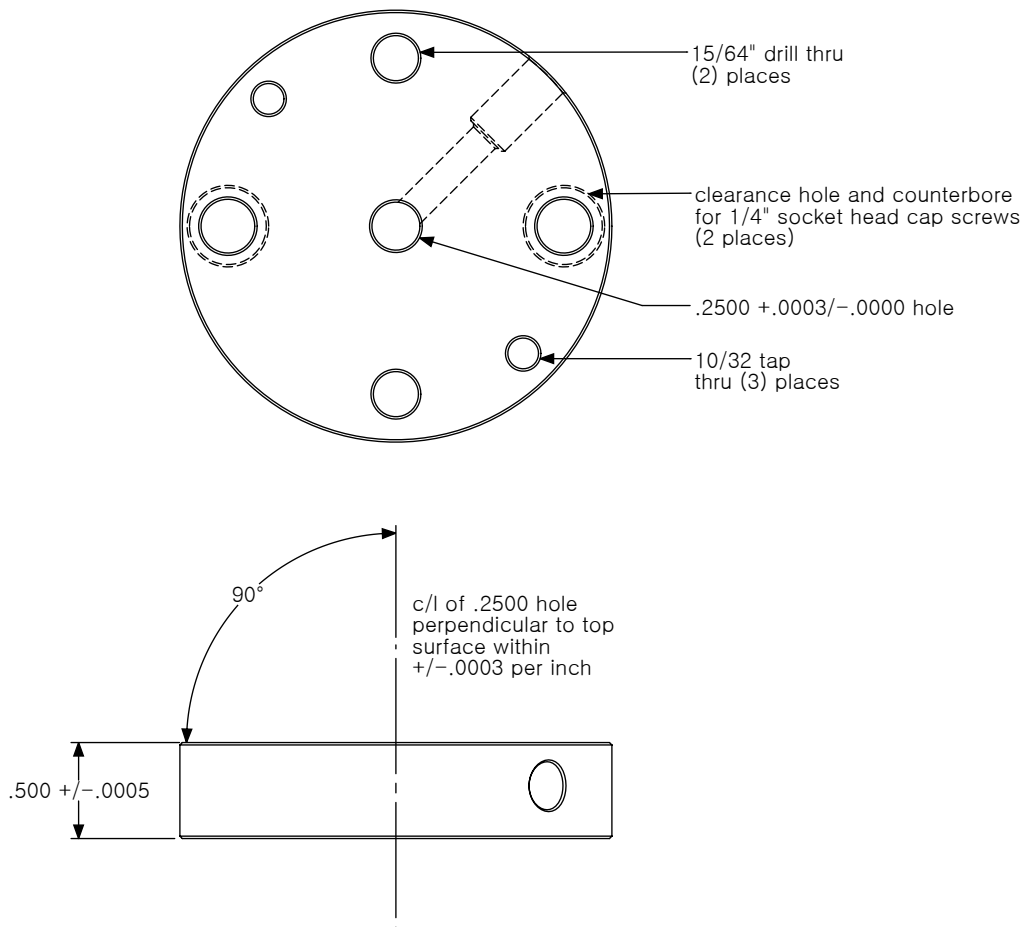
	FAMILY	MATERIAL					
CBTP STANDARD BUILD	CBTP	1144 steel, black oxide finish					
CUSTOMER PROVIDES INFO	CBTP						
REFERENCE NOTES							

CONSTRUCTION BALL / TARGET PAD

CAD on file



CBTP FEATURES
1144 STEEL, BLACK OXIDE FINISH (standard)



TRP
 Low-cost, efficient way for establishing a permanent, critical .2500 diameter target hole along with a flat and perpendicular reference upper surface. Epoxy, hot glue, or tack weld in place.

TRP ORDERING INFORMATION

	FAMILY	MATERIAL (OPTIONS)					
TRP STANDARD BUILD	TRP	1018 steel or (SS)					
CUSTOMER PROVIDES INFO	TRP	▪					
REFERENCE NOTES	_____						

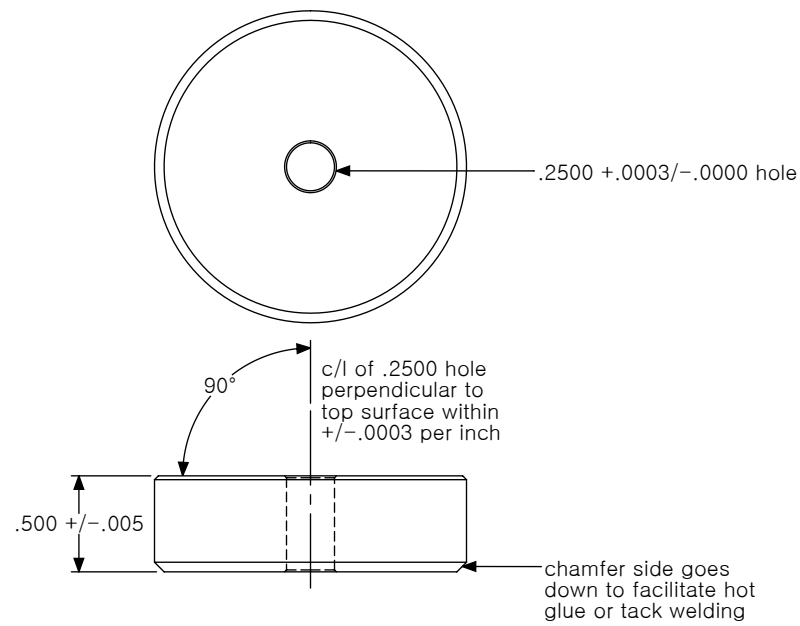
TARGET REFERENCE PAD

CAD on file



TRP FEATURES
 1018 STEEL, BLACK OXIDE FINISH (standard)

STAINLESS STEEL OPTION (for more corrosive environments)



MBTHA

Designed to locate the center of a scribed cross-hair using tick marks.

MBTHA ORDERING INFORMATION

	FAMILY	MATERIAL					
MBTHA STANDARD BUILD	MBTHA	1144 steel, black oxide finish					
CUSTOMER PROVIDES INFO	MBTHA						

CB

Intended to be used when standard, off the shelf designs, such as .3125 and .5000 offsets with .2500 shanks, cannot be used.

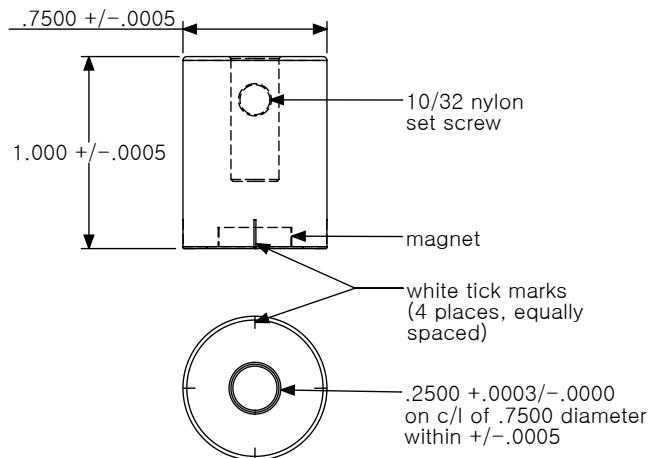
CB ORDERING INFORMATION

	FAMILY	MATERIAL					
CB STANDARD BUILD	CB	1144 steel and chrome					
CUSTOMER PROVIDES INFO	CB						

REFERENCE NOTES

MAGNETIC BASE TARGET HOLDER ADAPTOR

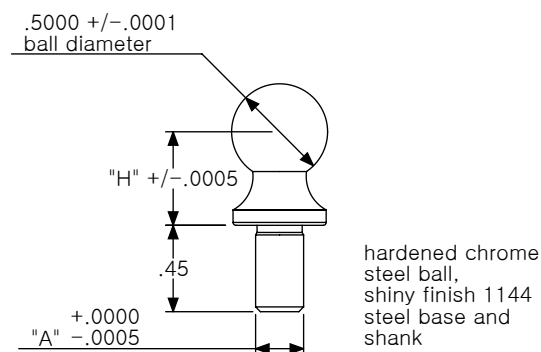
CAD on file



MBTHA FEATURES
1144 STEEL, BLACK OXIDE FINISH (standard)

CONSTRUCTION BALL

CAD on file



CB FEATURES
1144 STEEL, BLACK OXIDE FINISH and HARDENED CHROME STEEL BALL

K
4

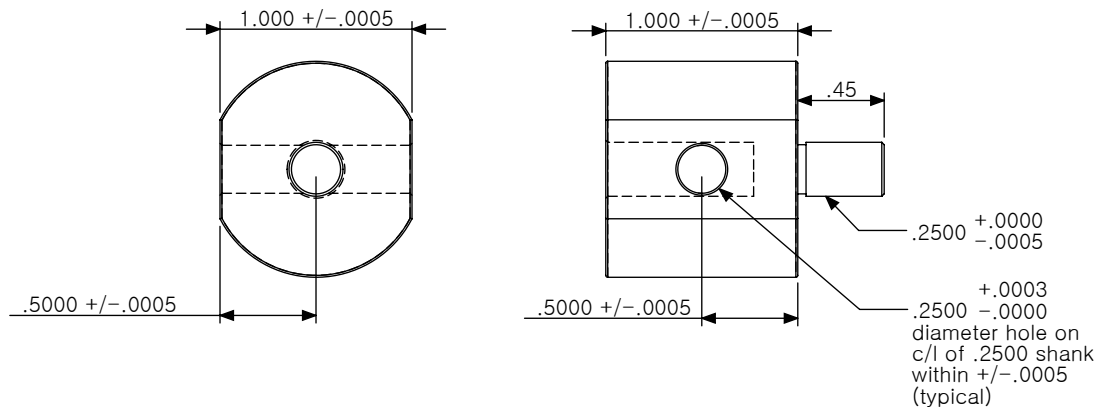
CA

CUBE ADAPTOR ORDERING INFORMATION

	FAMILY	MODEL	MATERIAL				
CA STANDARD BUILD	CA	500 or 3125	1144 steel, black oxide finish				
CUSTOMER PROVIDES INFO	CA	▪					
REFERENCE NOTES	_____						

CUBE ADAPTOR (CA - 500 and CA - 3125)

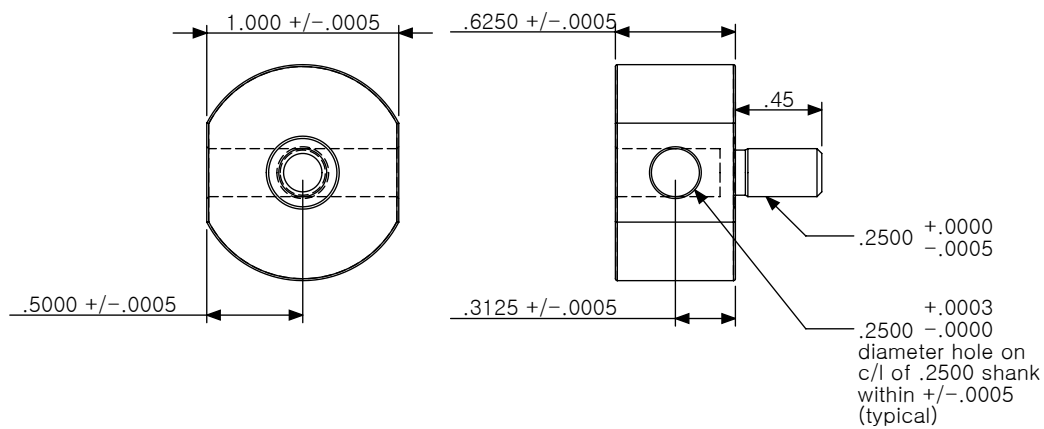
CAD on file



CA - 500



CA - 3125



CA FEATURES

1144 STEEL, BLACK OXIDE FINISH (standard)

K/5

BCA 1 and 2

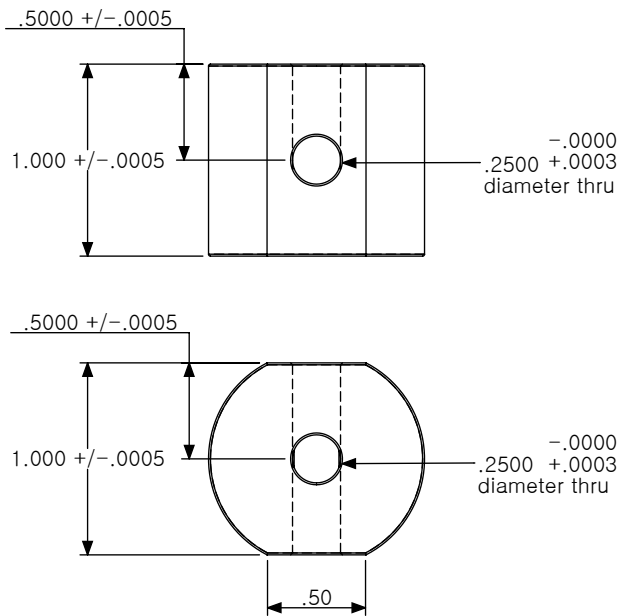
BCA ORDERING INFORMATION

	FAMILY	MODEL	MATERIAL				
BCA STANDARD BUILD	BCA	1 or 2	1144 steel, black oxide finish				
CUSTOMER PROVIDES INFO	BCA	▪					
REFERENCE NOTES	_____						

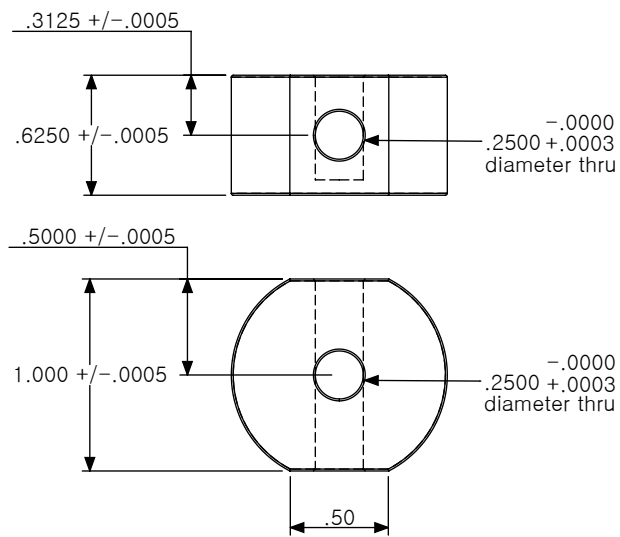
BOEING CUBE ADAPTOR - 1

BOEING CUBE ADAPTOR - 2

CAD on file



CAD on file



BCA 1 and 2
FEATURES
1144 STEEL, BLACK OXIDE
FINISH (standard)

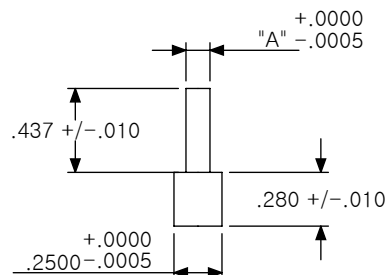
BCA PIN ORDERING INFORMATION

BCA PIN

	FAMILY	MATERIAL	SIZES AVAILABLE (OPTIONS)
BCA PIN STANDARD BUILD	BCA PIN	drill rod 0-1	.1250 / .1875 / .2500 / .2810 / .3125 / .3750 / .4060 / .4360 / .5000 / .7500 / 1.000
CUSTOMER PROVIDES INFO	BCA PIN	▪	
REFERENCE NOTES	_____		

BOEING CUBE ADAPTOR PIN

CAD on file



BCA PIN
FEATURES
DRILL ROD 0-1, BLACK
OXIDE FINISH

BHT

BHT ORDERING INFORMATION

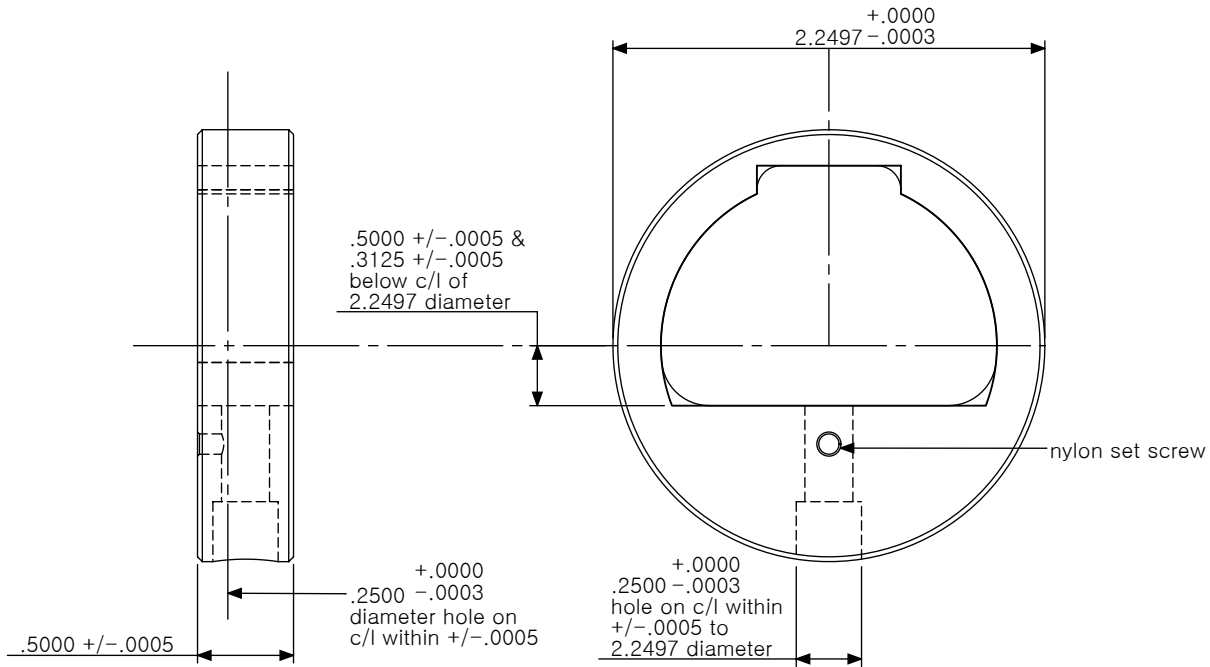
	FAMILY	MATERIAL				
BHT STANDARD BUILD	BHT	1144 steel, black oxide finish				
CUSTOMER PROVIDES INFO	BHT					
REFERENCE NOTES						

BOEING HEADER TARGET

CAD on file



BHT FEATURES
 1144 STEEL BLACK OXIDE
 FINISH-heat -treated and
 hardened to R/C 38-42



K/7

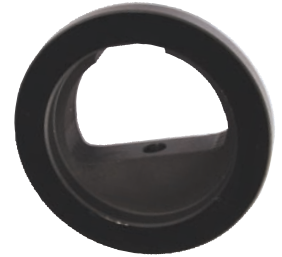
BHT - 2

BHT - 2 ORDERING INFORMATION

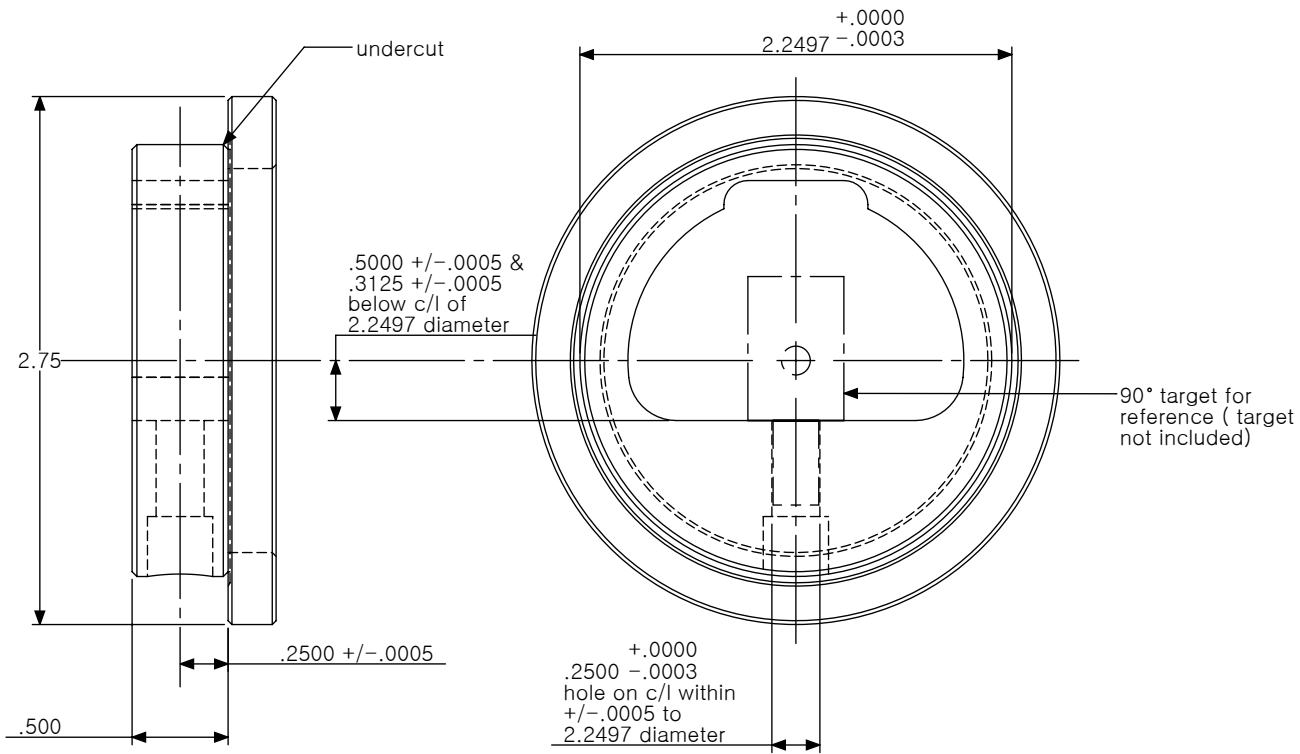
	FAMILY	MATERIAL				
BHT-2 STANDARD BUILD	BHT-2	1144 steel, black oxide finish				
CUSTOMER PROVIDES INFO	BHT-2					
REFERENCE NOTES						

BOEING HEADER TARGET - 2

CAD on file



BHT - 2
FEATURES
 1144 STEEL BLACK OXIDE
 FINISH – Heat -treated and
 hardened to R/C 38-42



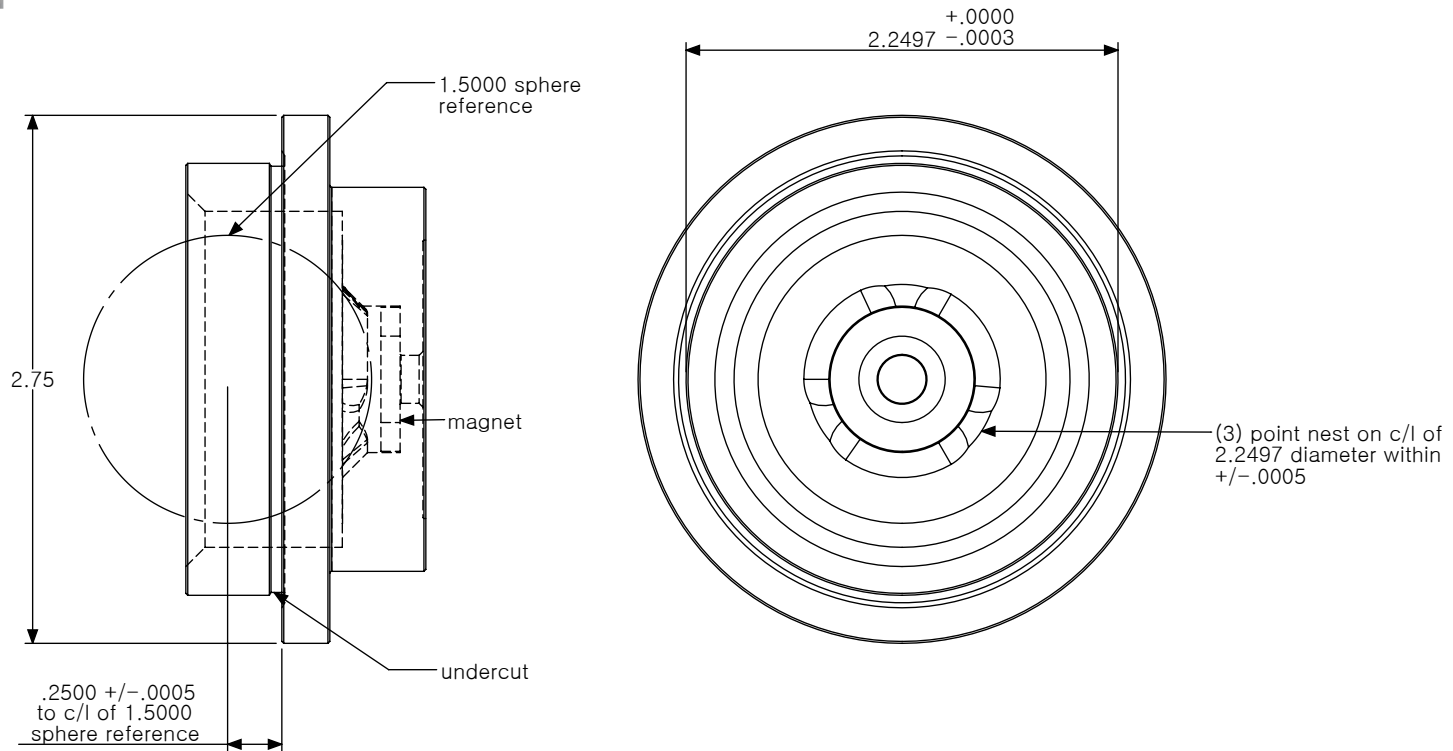
LT - BHT

LT - BHT ORDERING INFORMATION

	FAMILY	MATERIAL					
LT-BHT STANDARD BUILD	LT-BHT	1144 steel, black oxide finish					
CUSTOMER PROVIDES INFO	LT-BHT						
REFERENCE NOTES							

LASER TRACKER - BOEING HEADER TARGET

CAD on file



LT - BHT
FEATURES
1144 STEEL OXIDE FINISH
(standard)

LT - BHT
ORDERING
For custom lengths, please
call for quote.

K
9

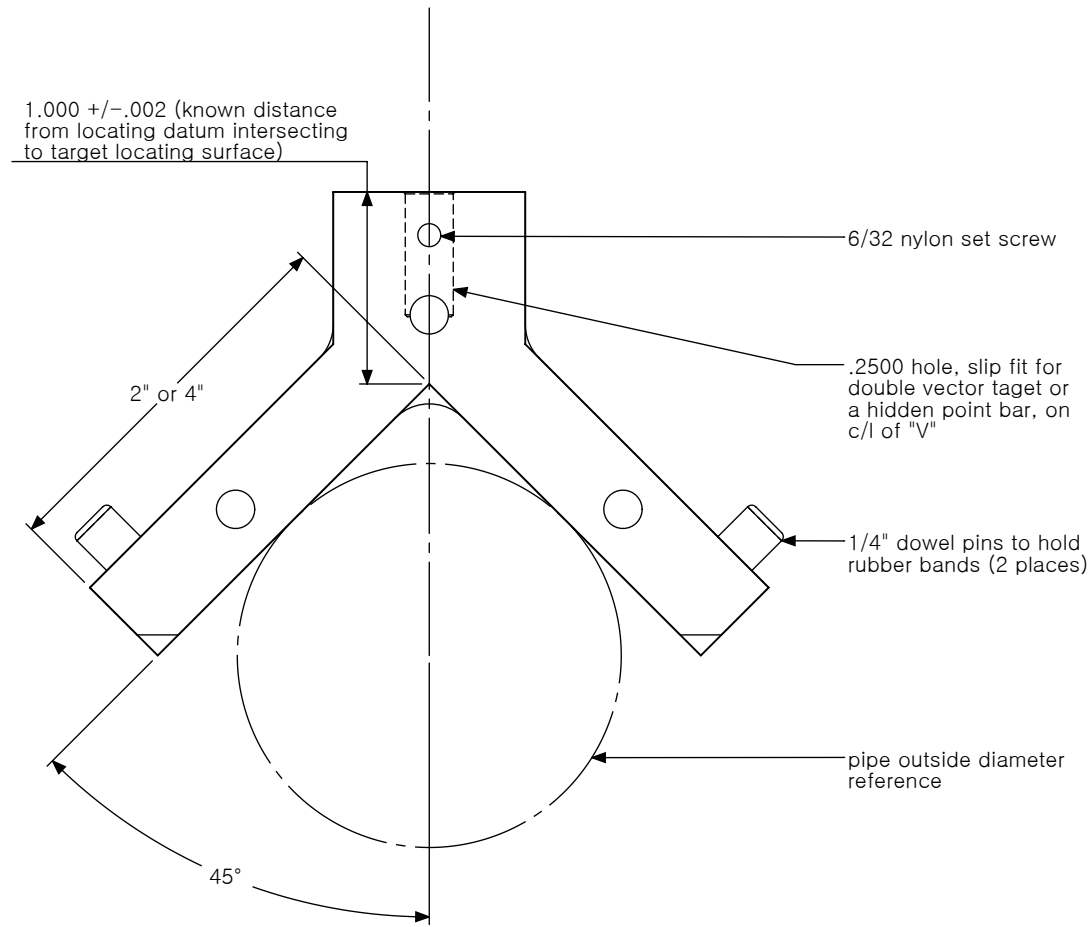
DVTPM
 Designed to find
 centerline of various
 diameters.

DVTPM ORDERING INFORMATION

	FAMILY	LEG LENGTH	MATERIAL				
DVTPM STANDARD BUILD	DVTPM	2 INCH or 4 INCH	aluminum				
CUSTOMER PROVIDES INFO	DVTPM	■					
REFERENCE NOTES	_____						

DOUBLE VECTOR TARGET PIPE MOUNT

CAD on file



DVTPM - 2



DVTPM - 4



**DVTPM
 FEATURES**
 ALUMINUM BLACK,
 ANODIZED COATING

K
10

E - RING

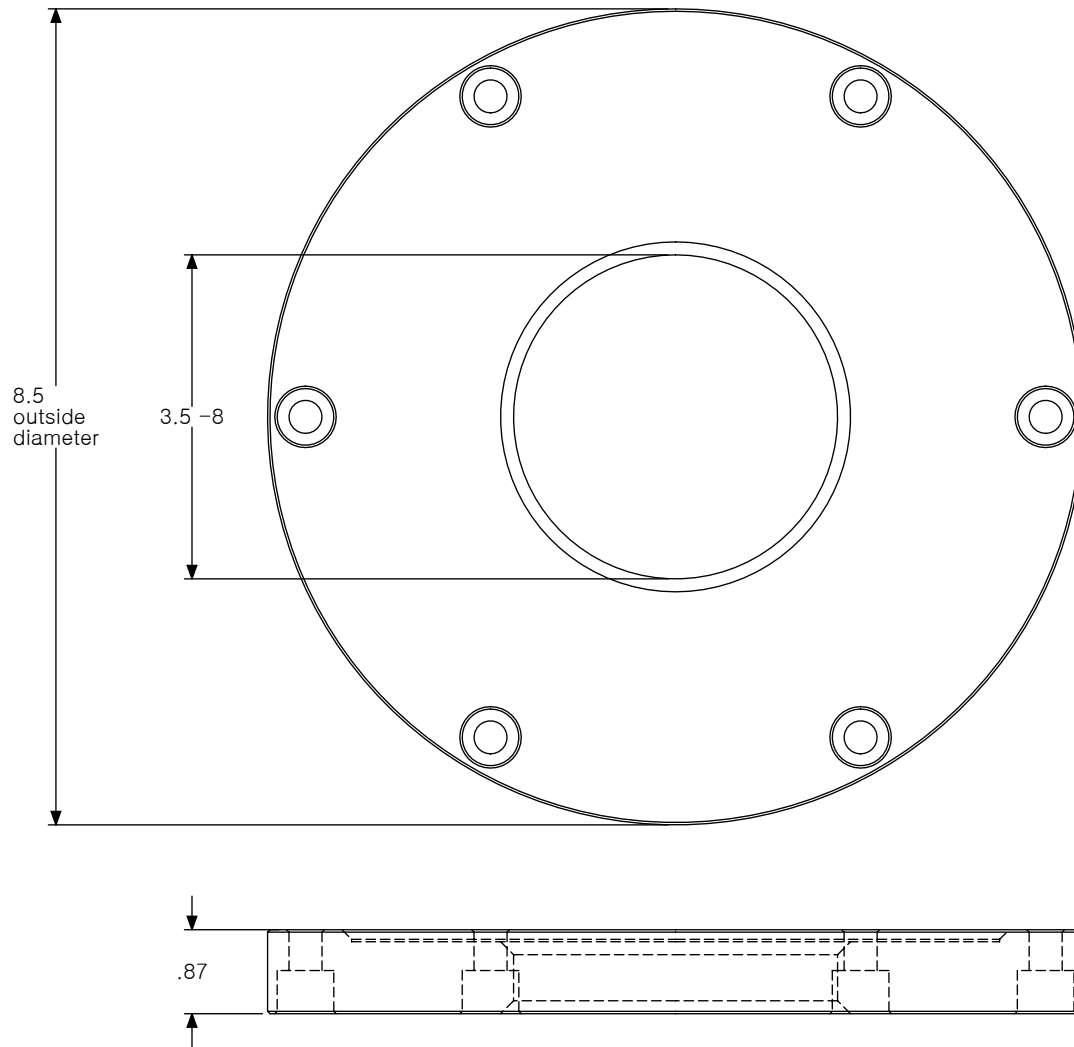
Used to adapt a Leica Laser Tracker to an instrument stand.

E - RING ORDERING INFORMATION

	FAMILY	MATERIAL					
E-RING STANDARD BUILD	E-RING	1144 steel, black oxide finish					
CUSTOMER PROVIDES INFO	E-RING						
REFERENCE NOTES							

ECONOMY RING

CAD on file



E - RING FEATURES
 ALUMINUM HARDCOAT
 BLACK ANODIZED FINISH

LSAR

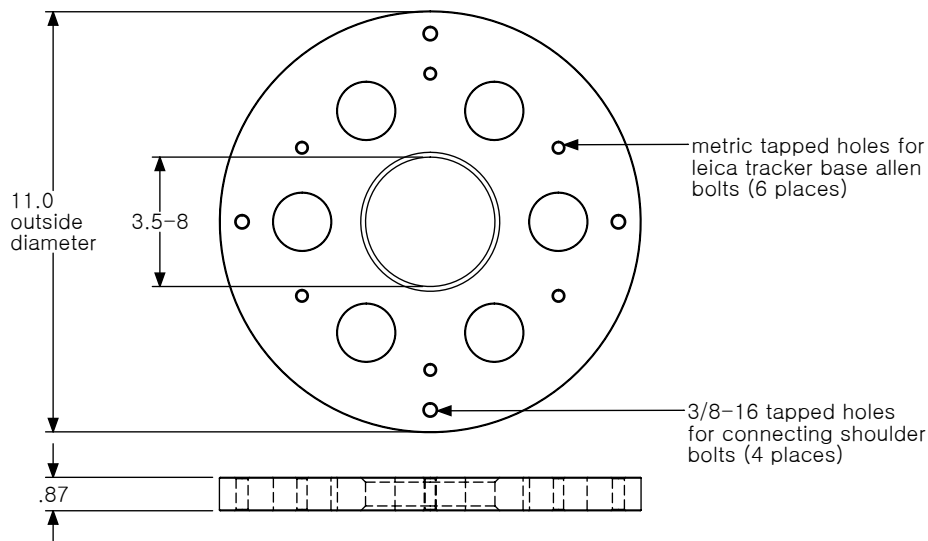
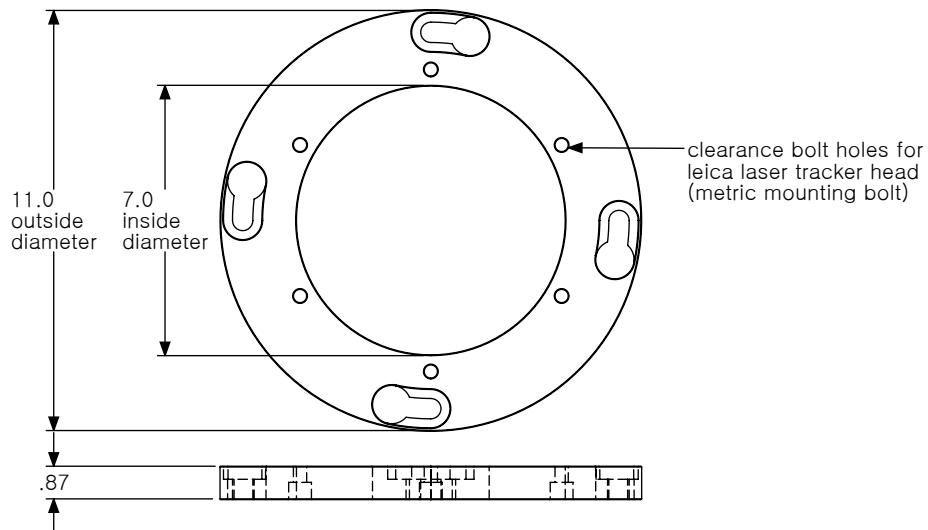
Used to adapt a Leica Laser Tracker to a Leica Laser Tracker Base or Optical Instrument Stand for quick mounting or removal.

LSAR ORDERING INFORMATION

	FAMILY	MATERIAL				
LSAR STANDARD BUILD	LSAR	aluminum				
CUSTOMER PROVIDES INFO	LSAR					
REFERENCE NOTES						

LEICA STAND ADAPTOR RINGS

CAD on file



scale- 1:5



LSAR
FEATURES
 6061 ALUMINUM
 HARDCOAT BLACK
 ANODIZED FINISH

LTHM

Allows the Leica Laser Tracker to lay securely in the horizontal position in a unique "V" nest (with or without adaptor rings).

LEICA TRACKER HORIZONTAL MOUNT ORDERING

	FAMILY	MATERIAL					
LTHM STANDARD BUILD	LTHM	aluminum					
CUSTOMER PROVIDES INFO	LTHM	aluminum					
REFERENCE NOTES							

LEICA TRACKER HORIZONTAL MOUNT



HORIZONTAL MOUNT FEATURES

6061 ALUMINUM
HARDCOAT BLACK ANODIZED FINISH

- May also be mounted vertically by using an upper adaptor ring.

HORIZONTAL MOUNT APPLICATION

The Leica Tracker Horizontal Mount will mount on the Leica Tracker Base or typical heavy optical instrument stand with a 3 1/2" - 8 thread. The Leica Tracker Horizontal Mount will attach to stands (with or without adaptor rings).